



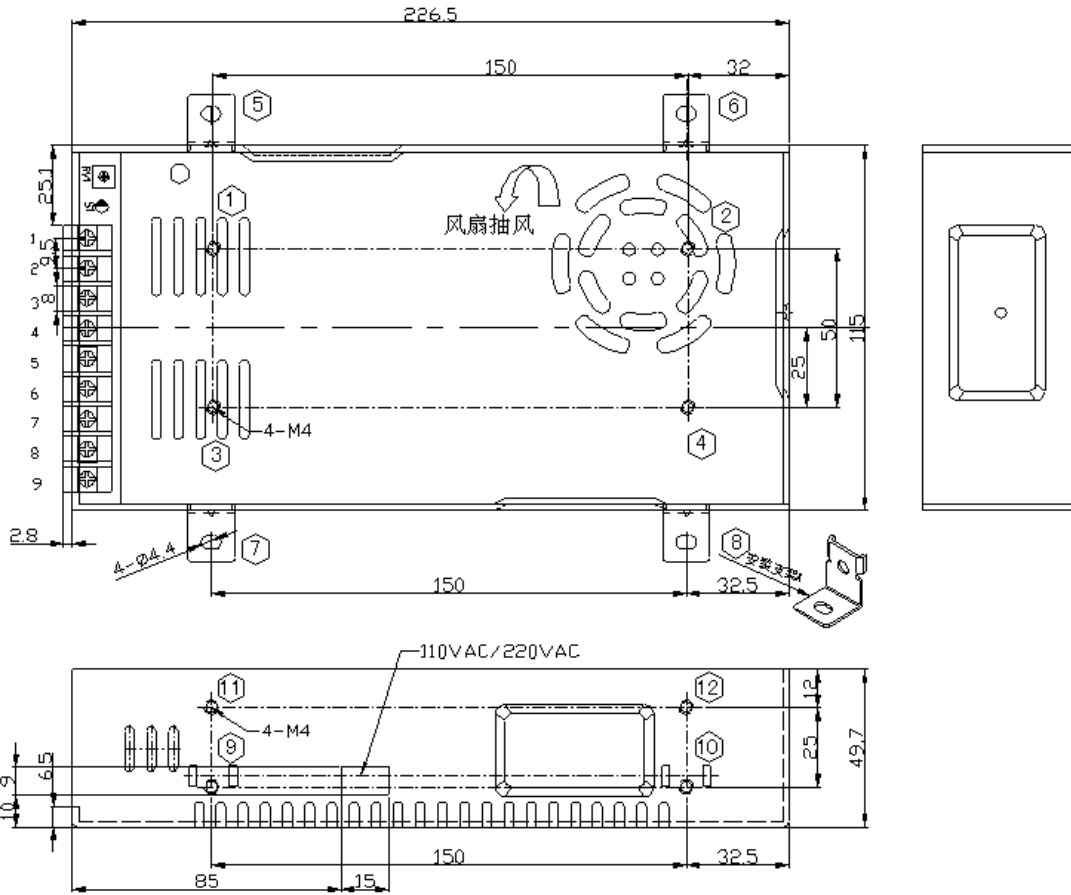
- Features:**
- Ac input selectable by switch (115Vac/230Vac)
 - Withstand 300Vac surge input (5S)
 - High Efficiency, and High reliability
 - Terminal block with plastic cover protection
 - Output protections: OPP/OLP/SCP/OVP/OTP
 - Wide operating ambient temperature (-20°C~70°C)
 - All using 105°C long life electrolytic capacitors.
 - 100% full load burn-in test
 - Suitable for peak load application
 - 2 years warranty

SPECIFICATION

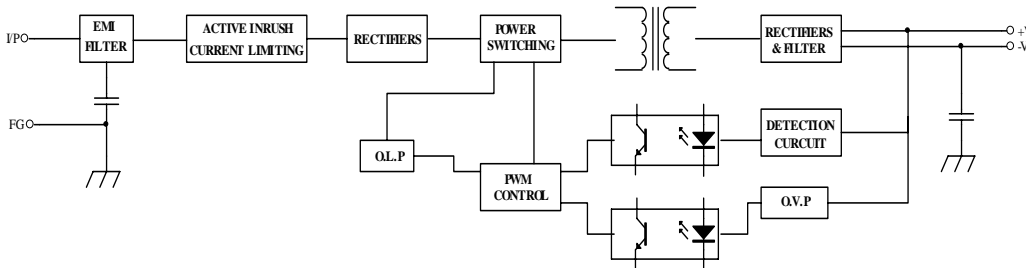
MODEL		GK-L/H600S24C	GK-L/H600S36C	GK-L/H600S48C	
OUTPUT	DC Output	24V	36V	48V	
	Rated Current	25A	14A	12.5A	
	Current Range	0~25A	0~14A	0~12.5A	
	Ripple and Noise	0~70°C	≤240mV	≤240mV	≤240mV
		Note 2 -20~0°C	≤480mV	≤480mV	≤480mV
	Voltage ADJ. Range	±10%			
	Voltage Accuracy	±1%			
	Line Regulation	±0.5%			
	Load Regulation	±1%			
	Set-up Time	<4.0S (220Vac input, Full load)			
	Hold up Time	>20mS (220Vac input, Full load)			
	Temperature Coefficient	±0.03%/°C			
Overshoot and Undershoot	<5.0%				
INPUT	Voltage Range	90~132Vac/176~264Vac			
	Frequency Range	47Hz~63Hz			
	Efficiency (Typical)	86%	86%	88%	
	AC Current (max.)	< 8.0A			
	Inrush Current (Typical)	<50A@220Vac Cold start			
	Leakage Current	Input to PG<1.0mA Input to output<0.25m			
PROTECTION	Over Load	105%~150% of rated output current, constant current, auto recovery			
	Over power	105%~150% of rated output current, constant current, auto recovery			
	Over temperature	95°C±5°C (detect on heatsink of power transistor);shut down,auto recovery after the temperature goes down			
	Over voltage	115%~150% of rated output current			
	Short Circuit	Long-term mode, auto recovery			
ENVIRONMENT	Operating amb. Temp. & Hum.	-20°C~70°C; 20%~90%RH No condensing (refer to the derating curve)			
	Vibration	10 ~ 500Hz, 2G 10min./1cycle, period for60min. each along X,Y, Z axes			
	Storage Temp. & Hum.	-40°C~85°C; 10%~95%RH No condensing			
SAFETY & EMC (Note 3)	Safety Standards	IEC/EN/UL/CSA 60950 GB4943			
	Withstand Voltage	Primary-Secondary:3.0KVac; ≤10mA.Primary-PG:1.5KVac; ≤10mA.Secondary-PG:0.5KVDC;≤10mA.			
	Isolation Resistance	≥100M ohms			
	EMI Conduction&Radiation	Compliance to EN55022 Class A			
	EMS Immunity	Compliance to EN61000-4-2,3,4,5,6,8,11			
OTHERS	MTBF (MIL-HDBK-217F)	More than 200,000Hrs (25°C, Full load)			
	Dimension (L*W*H)	226×115×50mm			
	Cooling method	Forced air cooling (built-in Fan)			
NOTE	1. All parameters NOT specially mentioned are measured at 230Vac input, rated load and 25°C of ambient temperature. 2. Measured at 20MHz of bandwidth by using a 12" twisted pair-wire terminated with a 0.1 uF & 47uF parallel capacitor 3. The SPS is considered a component which will be installed into final equipment. The equipment must be re-confirmed that it still meets EMC directives.				

Mechanical Specification

Unit: mm



Block Diagram



Derating Curve

